

Dogzilla.....

Craft Leftovers

I've always been pretty fond of this little creature. I wanted to make a 3-d version, instead of just the applique patch on baby bibs. I think he turned out pretty well. I especially love the big button eyes. I always am drawn to them, but never really know what to do with them once I have them in my possession. You could stitch eyes or use fabric cut outs for the eyes instead.

Ingredients:

Two 18" x 12" of main colored fabric, I think the fabric I used was from some swanky old man pants

One 6" x 6" piece of contrasting colored fabric

Two big buttons of different sizes

Needle and thread

Sewing machine

Stuffing



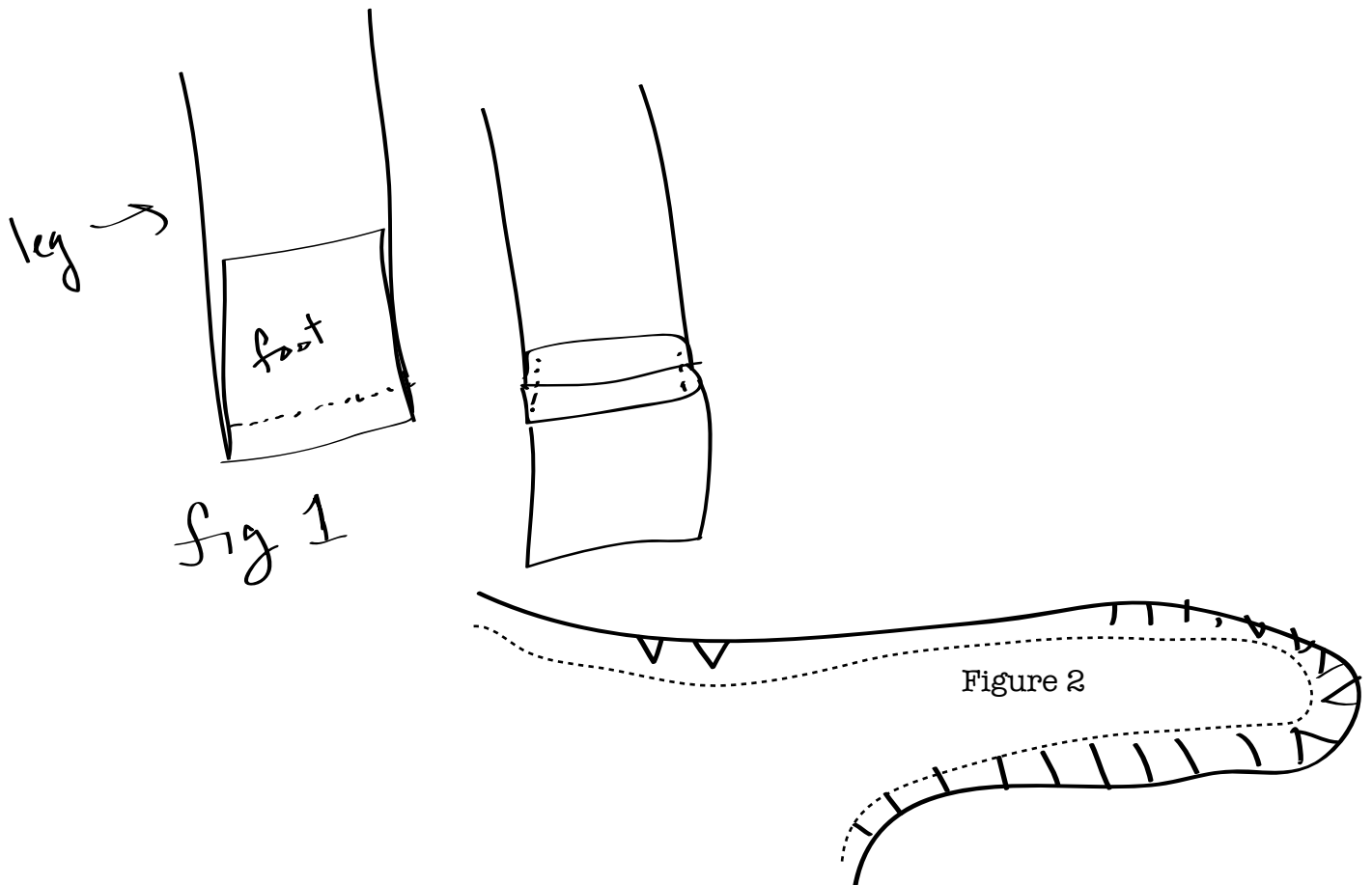
[Http://www.craftleftovers.com](http://www.craftleftovers.com)

Creative Commons by Kristin Roach 2008, Some Rights Reserved

Directions:

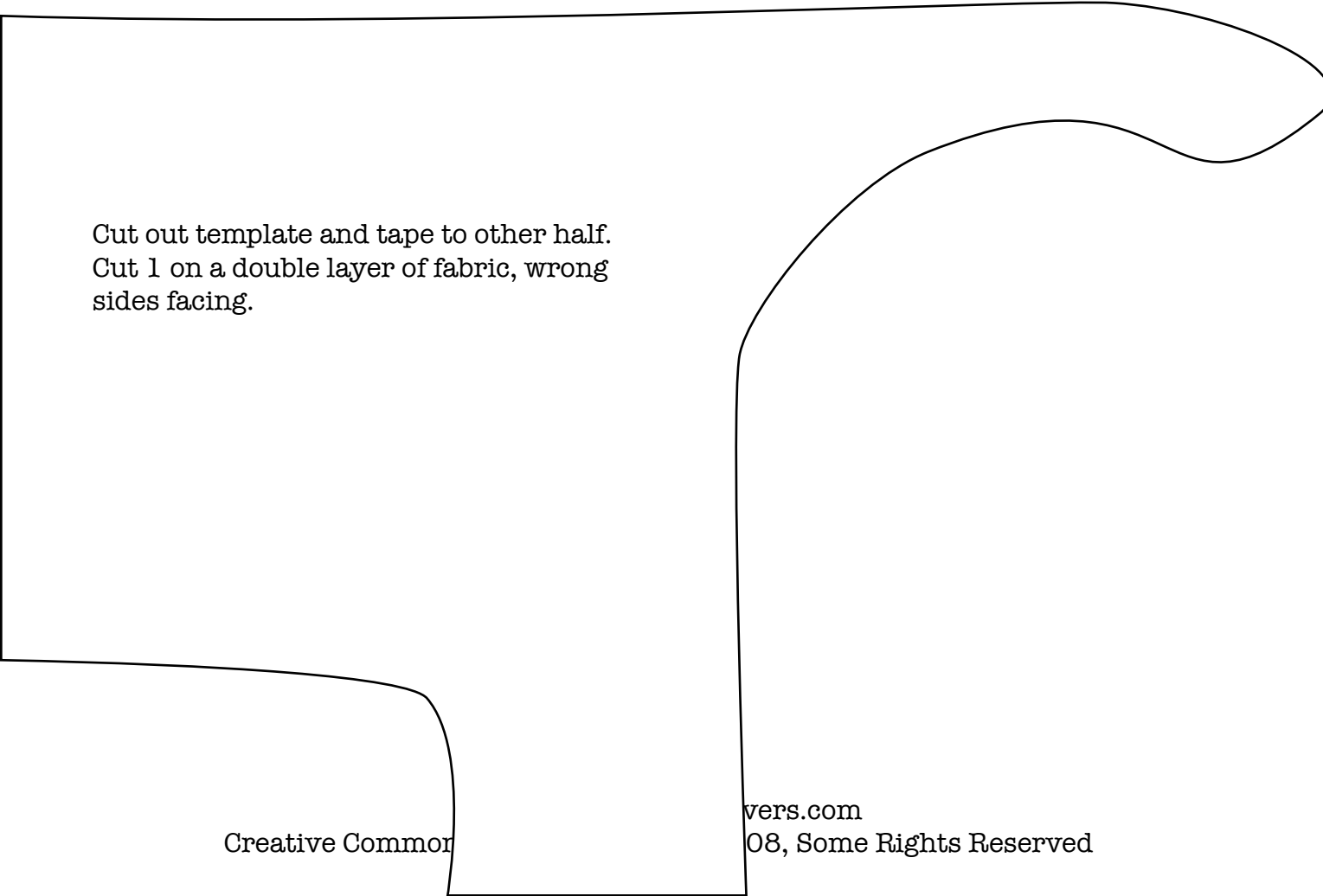
1. Cut out the fabric for your dogzilla using the templates on the next two pages.
2. Place the pin the "feet" with right sides facing, to the legs of the doggy. Sew with a straight stitch twice. Fold the feet down and press. If you are using a thicker fabric, sew the seam allowance flaps flat. Repeat for all the feet. (Figure 1)
3. Place the body right sides together and sew around all edges, leaving a 4 inch gap so you can turn him right sides out and stuff.
4. Trim and clip all the rounded seams (figure 2).
5. Turn right sides out.
6. Stuff. Make sure to really tear up the stuffing or it will be all lumpy in the body.
7. Fold the gap edges down and sew shut by hand.
8. Sew your big buttons on.

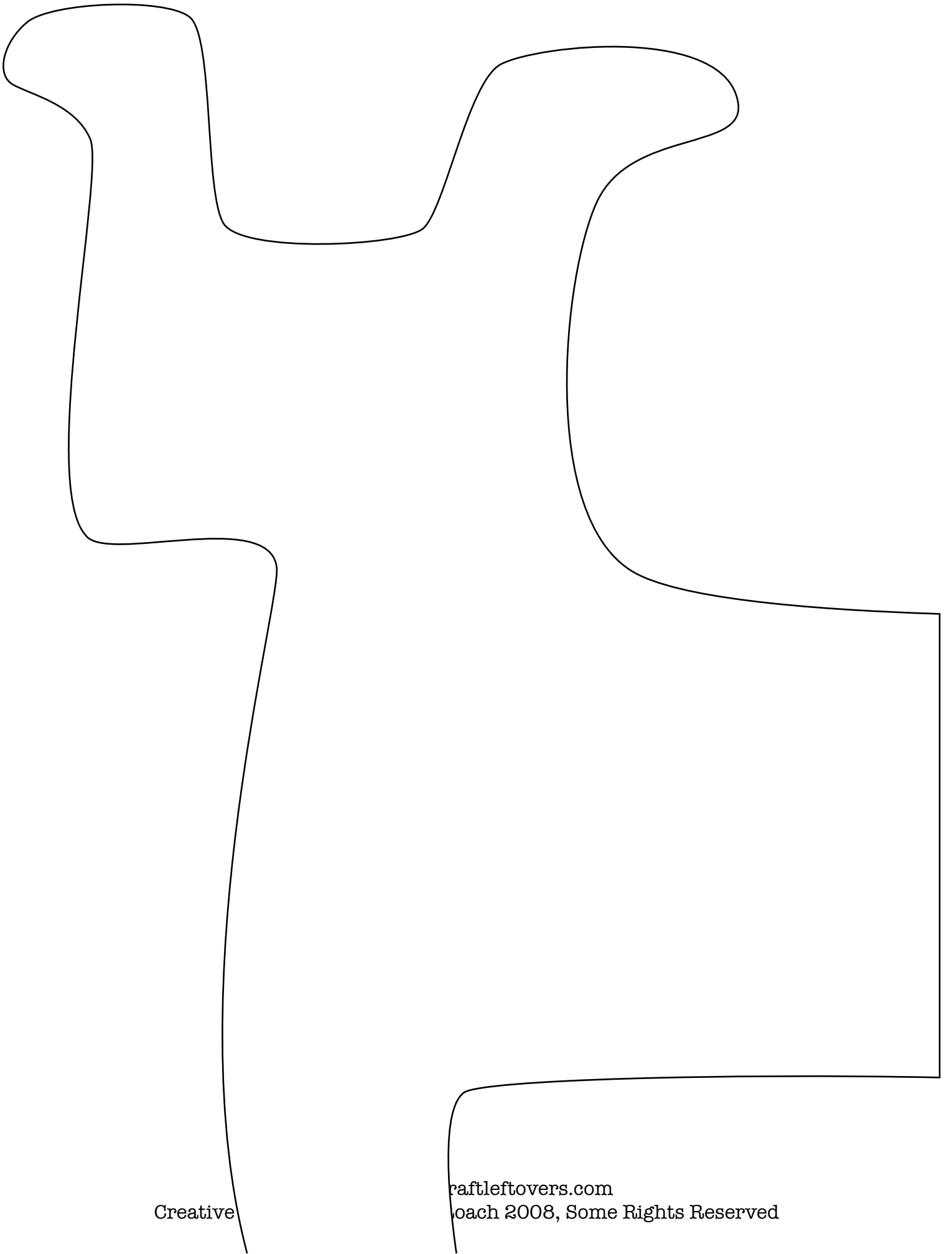
Now place in your studio some where, he will scare away all your distractions, or maybe invite them in for a party. It all depends on what you need. He's your crafting guardian guard dog.



Templates do not have a seam allowance, please add 1/4" seam allowances to your fabric or you will have a very skinny doggy monster.

Cut 4 from
contrasting
fabric





Creative

craftleftovers.com
© 2008, Some Rights Reserved